



| N. CODICE | DESCRIZIONE   | N. CODICE                   | DESCRIZIONE | N. CODICE     | DESCRIZIONE                | N. CODICE | DESCRIZIONE   |                              |
|-----------|---------------|-----------------------------|-------------|---------------|----------------------------|-----------|---------------|------------------------------|
| 1         | 21-27058      | LEVA COMANDO FRENO NUDA     | 56          | 13-21150      | DADO 12x1,25               | 111       | 29-15735      | TUBO RADIATORE INFERIORE     |
| 2         | 21-02151      | LEVA COMANDO FRENO ANTER.   | 57          | 29-10090-0-52 | TASSELLO GUIDACATENA       | 112       | 11-46100      | BULLONE TE 5x8               |
| 3         | 16-50510      | GUARNIZIONE 10x15x1 RAME    | 58          | 31-30500      | VITE TSPCE 6x12            | 113       | 27-36000      | RONDELLA 5x11                |
| 4         | 29-09124      | TUBO FRENO A DISCO ANTER.   | 59          | 25-25970      | PATTINO TENDICATENA COMPL. | 114       | 28-91500      | SILENT-BLOCK                 |
| 5         | 11-65041      | BULLONE FORATO TUBO FRENO   | 60          | 13-46314      | DISTANZIALE PER PATTINO    | 115       | 28-98012-0-59 | SUPPORTO ELETTRIVENTOLA      |
| 6         | 16-23593-0-63 | GOMMA PROTEZ. MANUBRIO      | 61          | 22-81111      | MOLLA PATTINO TENDICATENA  | 116       | 16-45538-0-18 | GRIGLIA RADIATORE            |
| 7         | 29-21977-0-52 | TRASMISSIONE GAS            | 62          | 16-22500      | GOMMA PER PATTINO TENDIC.  | 117       | 27-23641      | RADIATORE                    |
| 8         | 22-18531      | MANOPOLE -COPIA-            | 63          | 22-11180      | MAGLIA CONGIUNZ. 1/2x5/16  | 118       | 29-01821      | TAPPO RADIATORE              |
| 9         | 12-55091      | COMANDO GAS NUDDO           | 64          | 12-08050      | CATENA 1/2x5/16 P.120      | 119       | 29-15811      | TUBETTO 5x9                  |
| 10        | 28-98600      | SUPPORTO PER SFIATO         | 65          | 12-84771-0-52 | COPRICATENA                | 120       | 12-98300      | CUSCINETTO CONICO 20x42x15   |
| 11        | 29-15811      | TUBETTO 5x9                 | 66          | 25-98955      | PROTEZIONE CORONA          | 121       | 29-11556-0-33 | TELAIO                       |
| 12        | 21-02421      | LEVA COMANDO FRIZIONE       | 67          | 29-11891      | TENDICATENA SINISTRO       | 122       | 25-98670      | PROTEZIONE CUSCINETTO        |
| 13        | 21-27081      | LEVA COMANDO FRIZIONE NUDA  | 68          | 15-49632      | FORCELLONE                 | 123       | 31-02170      | VALVOLA SFIATO SERBATOIO     |
| 14        | 16-50510      | GUARNIZIONE IN RAME         | 69          | 15-14653      | FASCETTA FISS. TUBO FRENO  | 124       | 31-30520      | VITE 6x16 T.12               |
| 15        | 29-09094      | TUBO FRIZIONE IDRAULICA     | 70          | 29-11892      | TENDICATENA DESTRO         | 125       | 28-06071      | SERBATOIO                    |
| 16        | 22-20455-0-33 | MANUBRIO                    | 71          | 16-29490      | GOMMINO BATTUTA CAVALLETTO | 126       | 29-15811      | TUBETTO 5x9                  |
| 17        | 18-84983      | INTERAUTTORE MASSA          | 72          | 12-39972      | CAVALLETTO                 | 127       | 29-00525-0-59 | TAPPO SERBATOIO              |
| 18        | 22-28852-8-18 | MASCHERINA COMPL. C/DECALCO | 73          | 22-47022      | MOLLA CAVALLETTO ESTERNA   | 128       | 12-88517-8-18 | COPRISERBATOIO CON DECALCO   |
| 19        | 25-25220      | PASSAFILI TUBO FRENO        | 74          | 22-47019      | MOLLA CAVALLETTO INTERNA   | 129       | 31-30520      | VITE 6x16 T.12               |
| 20        | 25-15190-0-63 | PARAFANGO ANTERIORE         | 75          | 25-55725      | PERNO FORCELLONE           | 130       | 25-60310      | PIASTRINA PER VITE M6        |
| 21        | 28-98270      | SUPPORTO PARAFANGO ANTER.   | 76          | 11-55450      | BULLONE 8x30               | 131       | 13-62000      | DISTANZIALE                  |
| 22        | 15-08134      | FORCELLA                    | 77          | 13-46313      | DISTANZIALE PEDALE FRENO   | 132       | 25-19582-8-18 | PARAFANGO POST. C/DECALCO    |
| 23        | 28-95653      | SUPPORTO PARAFANGO ANTER.   | 78          | 22-80510      | MOLLA PEDALE FRENO         | 133       | 28-91779      | SILENZIATORE                 |
| 24        | 15-14600      | FASCETTA TUBO FRENO         | 79          | 25-28092      | PEDALE FRENO               | 134       | 10-41195      | ANELLO PARAF. 20x26x4 VYT    |
| 25        | 23-10060      | NIPPLES                     | 80          | 25-91181      | POMPA PEDALE FRENO         | 135       | 28-25505      | SEEGER 261                   |
| 26        | 25-03041      | PINZA FRENO ANTERIORE       | 81          | 10-84093      | ASTA COMANDO POMPA         | 136       | 15-25205      | FILTRO IN SPUGNA             |
| 27        | 27-23833      | RAGGIO 3x250 LATO DISCO     | 82          | 28-93130      | STAFFA BLOCC. ASTA FRENO   | 137       | 12-73181      | COPERCHIO SCATOLA FILTRO     |
| 28        | 27-23834      | RAGGIO 3x252 LATO NO-DISCO  | 83          | 29-10593      | TAPPO IN GOMMA PERNO FORC. | 138       | 15-24651      | FILTRO BENZINA               |
| 29        | 12-94010      | CUSCINETTO 15x35x11 SCH.    | 84          | 31-65510      | VITE TCCE 10x55            | 139       | 29-15811      | TUBETTO 5x9                  |
| 30        | 13-85766      | DISTANZ. MOZZO ANTER. DX    | 85          | 13-19010      | DADO AUTOBLOCC. 10 BASSO   | 140       | 27-81082      | RUBINETTO MISCELA            |
| 31        | 25-55693      | PERNO RUOTA ANTERIORE       | 86          | 27-54000      | RONDELLA 10x21             | 141       | 25-24655-0-59 | PASSARUOTA                   |
| 32        | 13-55240      | DISTANZIALE COPRIDISCO      | 87          | 10-03722      | AMMORTIZZATORE             | 142       | 25-60310      | PIASTRINA PER VITE M6        |
| 33        | 12-88071-1-18 | COPRIDISCO ANTERIORE        | 88          | 27-54000      | RONDELLA 10x21             | 143       | 14-40040      | ELASTICO COPERCHIO FILTRO    |
| 34        | 12-79400      | COPERTURA 2,75x21           | 89          | 11-63000      | BULLONE 10x50 AS           | 144       | 22-13576      | MANICOTTO SCATOLA FILTRO     |
| 35        | 12-16410      | CAMERA 2,75x21              | 90          | 22-55535      | MOLLA PROTEZ. TUBO FRENO   | 145       | 15-15360      | FASCETTA 25-45               |
| 36        | 15-38200      | FLAP 21x25                  | 91          | 29-15862      | TUBETTO 3x8                | 146       | 25-55815      | PERNO RUOTA POSTERIORE       |
| 37        | 22-07243      | MOZZO ANT. C/CUSC. E DIST.  | 92          | 28-05100      | SERBATOIO OLIO FRENI       | 147       | 13-85767      | DISTANZ. MOZZO POST. DES.    |
| 38        | 12-42864      | CERCHIO ANTERIORE 21        | 93          | 25-32530      | PEDANA POGGIPIEDI SIN.     | 148       | 12-94010      | CUSCINETTO 15x35x11 SCH.     |
| 39        | 13-39278      | DISCO FRENO ANTER. 175      | 94          | 22-62020      | MOLLA PEDANA POGGIAP. SIN. | 149       | 11-49010      | BULLONE 6x20 AS              |
| 40        | 11-49010      | BULLONE 6x20 AS             | 95          | 13-46530      | DISTANZIALE 8x12x17        | 150       | 27-39400      | RONDELLA S6                  |
| 41        | 27-39400      | RONDELLA S6                 | 96          | 11-55700      | BULLONE 8x45 AS            | 151       | 13-39414      | DISCO FRENO POSTERIORE 150   |
| 42        | 13-62704      | DISTANZ. INTERNO MOZZO ANT. | 97          | 31-27510      | VITE TCIC 4x20             | 152       | 22-08042      | MOZZO POST. C/CUSC. E DIST.  |
| 43        | 13-85765      | DISTANZ. MOZZO ANTER. SX    | 98          | 27-34500      | RONDELLA 4 VI              | 153       | 15-36000      | FLAP 17/18x25                |
| 44        | 13-17000      | DADO 8x8 CH 13              | 99          | 14-01040      | ELETTRIVENTOLA             | 154       | 12-89587      | CORONA 2 60                  |
| 45        | 27-48000      | RONDELLA 8 CROWER           | 100         | 11-57990      | BULLONE 8x180 AS           | 155       | 12-18460      | CAMERA 4,00x18               |
| 46        | 15-17500      | FERMAFASCIONE ANTERIORE     | 101         | 27-49500      | RONDELLA 8x18              | 156       | 12-81520      | COPERTURA 4,00x18            |
| 47        | 22-03344      | MARMITTA                    | 102         | 13-17020      | DADO AUTOBLOCC. 8 BASSO    | 157       | 29-09125      | TUBO FRENO A DISCO POSTER.   |
| 48        | 16-80321      | GUARNIZIONE PER GHIERA      | 103         | 22-62010      | MOLLA PEDANA POGGIAP. DES. | 158       | 25-03033      | PINZA FRENO POSTER.          |
| 49        | 16-23340      | GOMMA PER CARTER PARASASSI  | 104         | 25-32520      | PEDANA POGGIPIEDI DES.     | 159       | 12-42866      | CERCHIO POSTER. 18           |
| 50        | 31-63930      | VITE TSPCE 8x20             | 105         | 27-28092      | REGOLATORE                 | 160       | 15-17550      | FERMAFASCIONE POSTERIORE     |
| 51        | 12-32172      | CARTER PARASASSIA           | 106         | 18-01851      | IMPIANTO TERMOINTERAUTTORE | 161       | 27-48000      | RONDELLA 8 CROWER            |
| 52        | 13-49201      | DISTANZIALE FORCELLONE      | 107         | 29-11555-0-33 | TELAIO COLLEGAMENTO SIN.   | 162       | 13-17000      | DADO 8x8 CH 13               |
| 53        | 10-41195      | ANELLO PARAPOLVERE 20x26x4  | 108         | 29-11554-0-33 | TELAIO COLLEGAMENTO DES.   | 163       | 13-62714      | DISTANZ. INTERNO MOZZO POST. |
| 54        | 11-26451      | BOCCOLA SINTERIZZATA        | 109         | 15-15230      | FASCETTA 14-24             | 164       | 13-85769      | DISTANZ. MOZZO POST. SIN.    |
| 55        | 27-55600      | RONDELLA BISELLATA 12x24    | 110         | 29-15736      | TUBO RADIATORE SUPERIORE   | 165       | 27-55600      | RONDELLA BISELLATA 12x24     |

## PARTICOLARI NON FIGURANTI

|               |                           |
|---------------|---------------------------|
| 12-43060      | CHIAVE CANDELA            |
| 13-34060-0-18 | DECALCO CICLOM. -SERIE-   |
| 13-34050-3-18 | DECALCO PARAFANGO POSTER. |
| 13-34050-4-18 | DECALCO COPRISERBATOIO    |
| 13-34050-5-18 | DECALCO MASCHERINA        |
| 13-34060-6-18 | DECALCO COMPLETAMENTO     |
| 27-02556-0-57 | RUOTA ANTERIORE           |
| 27-04824-0-57 | RUOTA POSTERIORE          |
| 37-42860      | MOTORE                    |

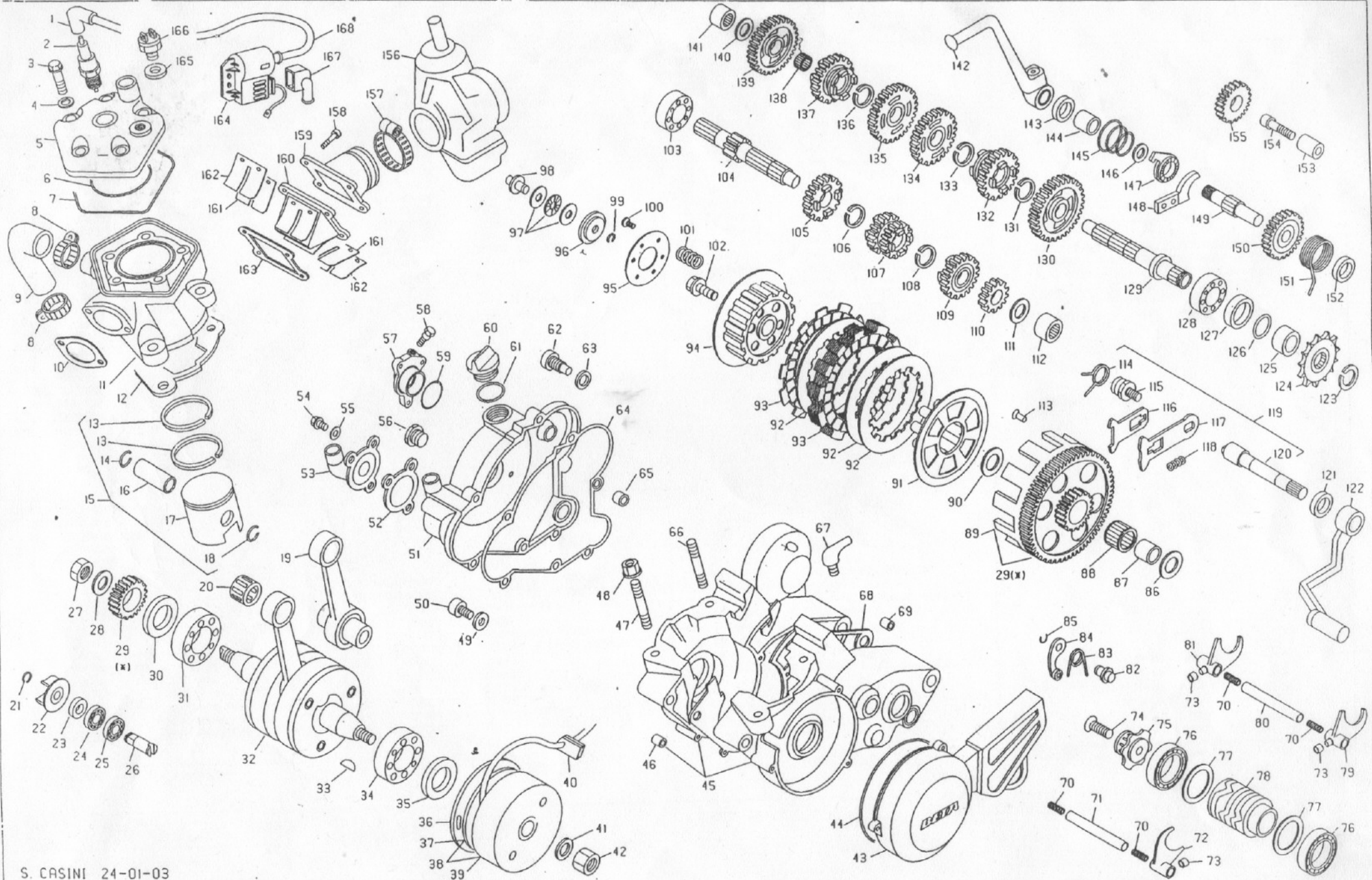
# Beta

## MOTORE REV-80

COD. 37-42860

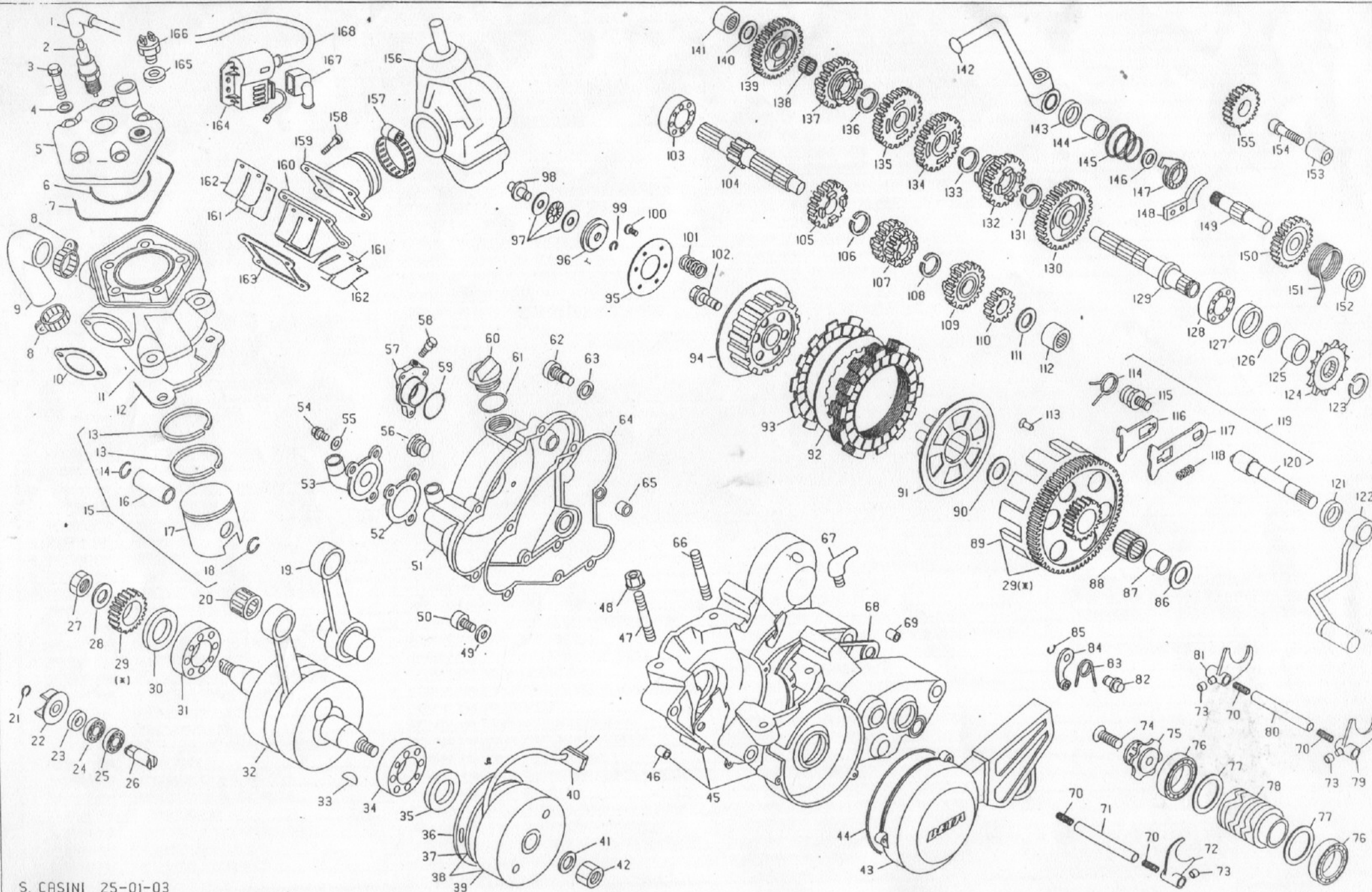
DAL MOTORE N. BKT80 300001

ES-M0230





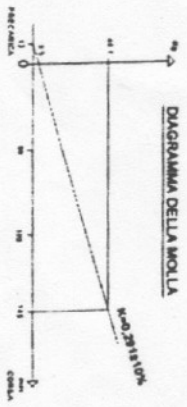
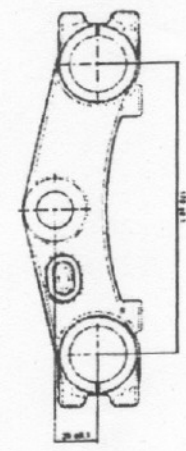
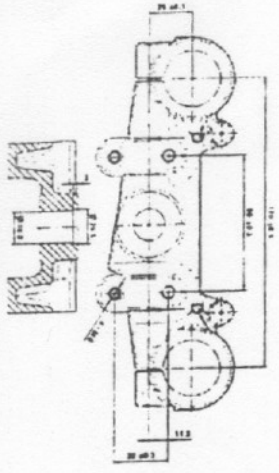
| Nº | Código         | Descripción                               | Nº   | Código         | Descripción                            | Nº  | Código         | Descripción                            | Nº  | Código         | Descripción                    |                             |
|----|----------------|---|------|----------------|--|-----|----------------|--|-----|----------------|--------------------------------|-----------------------------|
| 1  | 27.13513. 0.00 | PIPA BUJIA REV-80                         | 56   | 29.10030. 0.00 | TAPON VISOR ACEITE                     | 111 | 27.60500. 0.00 | ARANDELA SPEC. C72 12.25.1             | 166 | 29.11960. 0.00 | TERMOSTATO TEMPERATURA TR.     |                             |
| 2  | 12.25200. 0.00 | BUJIA RN3C SCHERMATA                      | 57   | 12.91895. 0.33 | CUERPO BOMBA C/PISTÓN REV-80           | 112 | 11.22250. 0.00 | COJINETE AGUJAS NK 12.19.12            | 167 | 12.30460. 0.00 | CAPUCHON BOBINA DUCATI         |                             |
| 3  | 11.52425. 0.00 | TORNILLO ESPECIAL 7.33                    | 58   | 31.83530. 0.00 | TRNLL ESPECIAL CUERPO BOMBA REV-80     | 113 | 27.31640. 0.00 | REMACHE PARA CORONA 5.9 EMBRAGUE RK    | 168 | 12.08200. 0.00 | CADENA 1/2 5/16 P.126          |                             |
| 4  | 27.45100. 0.00 | ARANDELA PLANA COBRE 7.12.0,2             | 59   | 10.66750. 0.00 | JUNTA TORICA CUERPO BOMBA REV-80       | 114 | 22.72031. 0.00 | MUELLE RETORNO SELECTOR REV-80         |     |                |                                |                             |
| 5  | 29.12050. 0.57 | CULATA REV-80                             | 60   | 29.09600. 0.00 | TAPON ALIMENTACION ACEITE RK6-50       | 115 | 25.54410. 0.00 | EJE FIJACION HORQUILLA SELECTOR RK6-50 |     |                |                                |                             |
| 6  | 10.67110. 0.00 | JUNTA TORICA 53,70.57,26.1,78             | 61   | 10.66340. 0.00 | JUNTA TORICA 16.3                      | 116 | 31.20980. 8.00 | HORQUILLA SELECTOR BK C/EJE            |     |                |                                |                             |
| 7  | 10.66960. 0.00 | JUNTA TORICA 94,97.98.53.1,78             | 62   | 31.88500. 0.00 | TORNILLO RETORNO MUELLE HORQUILLA R    | 117 | 31.20970. 8.00 | HORQUILLA SELECTOR BK C/EJE            |     |                |                                |                             |
| 8  | 15.15230. 0.00 | BRIDA 14/24                               | 63   | 16.49100. 0.00 | JUNTA 8.12.0,5 (COBRE)                 | 118 | 22.68010. 0.00 | MUELLE HORQUILLA CAMBIO RK6/TECHNO     |     |                |                                |                             |
| 9  | 29.15910. 0.00 | TUBO REFR. CIL. RK650 sust.29.15671. 0.00 | 64   | 16.71520. 0.00 | JUNTA TAPA EMBRAGUE RK6-50             | 119 | 10.12010. 8.00 | EJE PALANCA CAMBIO COMPL. RK6-50       |     |                |                                |                             |
| 10 | 16.80321. 0.00 | JUNTA ESCAPE RR                           | 65   | 16.37010. 0.00 | CASQUILLO CENTRADOR 9.15               | 120 | 10.12010. 0.00 | EJE PALANCA CAMBIO RK6-50              |     |                |                                |                             |
| 11 | 12.52062. 0.57 | CILINDRO D48 REV-80                       | 66   | 25.98050. 0.00 | ESPARRAGO 8.41                         | 121 | 10.47500. 0.00 | RETEN 12.20.5                          |     |                |                                |                             |
| 12 | 16.61750. 0.00 | JUNTA CILINDRO CARTER RK6                 | 67   | 27.23470. 0.00 | RACORD MOTOR RK6-50/ TUBO GASOLINA R   | 122 | 21.21220. 0.00 | PALANCA CAMBIO MARCHAS RK6-50          |     |                |                                |                             |
| 13 | 28.60180. 0.00 | SEGMENTO D.48 AC RK6 (CROMADO)            | 68   | 16.55030. 0.00 | JUNTA CARTER RK6-50                    | 123 | 28.25410. 0.00 | SEEGER AS 20E                          |     |                |                                |                             |
| 14 | 10.42010. 0.00 | ANILLO CIERRE BULON 12 S/GANCHO           | 69   | 16.41530. 0.00 | CASQUILLO CENTRADOR 12.14,5            | 124 | 25.61050. 0.00 | PIÑON CADENA Z.11 TR-125               |     |                | MATERIAL NO FIGURA EN DESPIECE |                             |
| 15 | 25.80210. 8.00 | PISTÓN COMPLETO D48 REV-80                | 70   | 22.65015. 0.00 | MUELLE EJE CAMBIO                      | 125 | 13.55250. 0.00 | DISTANCIADOR PIÑON CADENA RK6-50       |     |                |                                |                             |
| 16 | 28.93620. 0.00 | BULON 12.40                               | 71   | 25.61011. 0.00 | EJE GUIA HORQUILLA CAMBIO REV-80       | 126 | 10.66350. 0.00 | JUNTA TORICA 18,77,22,33.1,78          |     |                | 12.00686. 8.00                 | CAMBIO COMPLETO REV-80 03   |
| 17 | 25.80270. 0.00 | PISTON DIAM.48 RK6-50                     | 72   | 15.64031. 0.00 | HORQUILLA 5-6 REV-80 2°vers.           | 127 | 10.64700. 0.00 | RETEN 26.35.7                          |     |                | 22.05070. 8.00                 | EJE PUESTA EN MARCHA REV-80 |
| 18 | 10.42010. 0.00 | ANILLO CIERRE BULON 12 S/GANCHO           | 73   | 11.29035. 0.00 | TORNILLO 6.30 TSPCE                    | 128 | 12.98000. 0.00 | COJINETE 20.42.12                      |     |                | 28.08067. 8.00                 | SERIE JUNTAS MOTOR RK6-50   |
| 19 | 11.03713. 8.00 | BIELA COMPLETA REV-80 03 2°vers           | 74   | 31.30510. 0.00 | TORNILLO 6.30 TSPCE                    | 129 | 10.28051. 8.00 | EJE SECUNDARIO REV-80                  |     |                |                                |                             |
| 20 | 16.11500. 0.00 | GABIA BULON 12.15.15                      | 75   | 12.19122. 0.00 | SELECTOR MARCHAS REV-80 03             | 130 | 18.52030. 8.00 | ENGRANAJE 2° VEL. SU REV-80            |     |                |                                |                             |
| 21 | 28.22660. 0.00 | SEEGER 9E                                 | 76   | 12.99405. 0.00 | COJINETE 25x37x7                       | 131 | 28.25410. 0.00 | SEEGER AS 20E                          |     |                |                                |                             |
| 22 | 31.21831. 0.00 | ASPAS BOMBA AGUA RK6-50 (BOMBA SEPARAD    | 77   | 27.73695. 8.00 | ARANDELA ESP.CAMBIO MARCHAS REV-80     | 132 | 18.67141. 8.00 | ENGRANAJE 6° VEL. SU 2° REV-80         |     |                |                                |                             |
| 23 | 10.44610. 0.00 | RETEN 10.18.4 M/INOX.                     | 78   | 12.19113. 0.00 | SELECTOR MARCHAS REV-80                | 133 | 28.25410. 0.00 | SEEGER AS 20E                          |     |                |                                |                             |
| 24 | 12.93400. 0.00 | COJINETE 10.19.5 (61800-2RS1)             | 79   | 15.64012. 0.00 | HORQUILLA 1-4 REV-80 2°vers.           | 134 | 18.61500. 8.00 | ENGRANAJE 3° VEL. SU 2° RK6-50         |     |                |                                |                             |
| 25 | 12.93390. 0.00 | COJINETE 10.19.5 (61800)                  | 80   | 25.51021. 0.00 | EJE GUIA HORQUILLA CAMBIO REV-80       | 135 | 18.64100. 8.00 | ENGRANAJE 4° VEL. SU 2° RK6-50         |     |                |                                |                             |
| 26 | 10.27750. 0.00 | EJE BOMBA AGUA RK6/97 (SEPARADO)          | 81   | 15.64011. 0.00 | HORQUILLA 2-3 REV-80 2°vers.           | 136 | 28.25410. 0.00 | SEEGER AS 20E                          |     |                |                                |                             |
| 27 | 13.28951. 0.00 | TUERCA ESPE. 14.1,25.5 CH.22              | 82   | 25.54430. 0.00 | EJE FIJACION LEVA CAMBIO TECHNO        | 137 | 18.66441. 8.00 | ENGRANAJE 5° VEL. SU 2° REV-80 2°vers. |     |                |                                |                             |
| 28 | 27.61550. 0.00 | ARANDELA SPEC. C72 14,3.20.1 MM           | 83   | 22.39580. 0.00 | MUELLE FIJACION MARCHAS RK6-50         | 138 | 16.12650. 0.00 | GABIA 14.18.8                          |     |                |                                |                             |
| 29 | 29.07302. 8.00 | TRANSMISION PRIMARIA C/CAMPANA REV-80     | 84   | 21.17150. 0.00 | MANDO FIJACION MARCHA COMPL. REV-80    | 139 | 18.43023. 8.00 | ENGRANAJE 1° VEL. SU REV-80 03         |     |                |                                |                             |
| 30 | 10.64110. 0.00 | RETEN 20.35.6/6,5 VYTON                   | 85   | 28.22700. 0.00 | SEEGER 10E                             | 140 | 27.60500. 0.00 | ARANDELA SPEC. C72 12.25.1             |     |                |                                |                             |
| 31 | 12.99022. 0.00 | COJINETE 20.52.15 C/GABIA                 | 86   | 27.71100. 0.00 | ARANDELA SPEC. 17.30.1,5               | 141 | 11.22250. 0.00 | COJINETE AGUJAS NK 12.19.12            |     |                |                                |                             |
| 32 | 10.00681. 0.00 | CIGÜEÑAL MOTOR REV-80 2°vers.             | 87   | 11.27120. 0.00 | CASQUILLO 17.21.17,2 CORONA EMBRAGUE R | 142 | 21.55153. 0.00 | PALANCA PUESTA EN MARCHA CR-65/2001    |     |                |                                |                             |
| 33 | 12.46000. 0.00 | CHAVETA 3.3,7,9,7                         | 88   | 16.17280. 0.00 | GABIA 21.25.17                         | 143 | 10.52010. 0.00 | RETEN 14.24.7                          |     |                |                                |                             |
| 34 | 12.99022. 0.00 | COJINETE 20.52.15 C/GABIA                 | 89   | 12.20770. 0.00 | CAMPANA EMBRAGUE MOD. RK6-50           | 144 | 11.31020. 0.00 | CASQUILLO 14.18.11,5                   |     |                |                                |                             |
| 35 | 10.64110. 0.00 | RETEN 20.35.6/6,5 VYTON                   | 90   | 27.71100. 0.00 | ARANDELA SPEC. 17.30.1,5               | 145 | 22.36570. 0.00 | MUELLE CONICO ARRANQUE RK6-50          |     |                |                                |                             |
| 36 | 25.60165. 0.00 | PLETINA STATOR REV-80 03                  | 91   | 12.29593. 0.00 | CABEZAL EMBRAGUE REV-80                | 146 | 27.61550. 0.00 | ARANDELA SPEC. C72 14,3.20.1 MM        |     |                |                                |                             |
| 37 | 28.97807. 0.00 | STATOR PARA VOLANTE REV-80                | 92   | 13.38130. 0.00 | DISCO SEPARADOR RK6-50                 | 147 | 22.14090. 8.00 | PIÑON PUESTA EN MARCHA TECHNO-50       |     |                |                                |                             |
| 38 | 31.03267. 0.00 | VOLANTE MAGNETICO REV-80 03               | 93   | 13.43210. 0.00 | DISCO EMBRAGUE RK6-50                  | 148 | 25.57945. 0.00 | PLACA EJE ARRANQUE REV-80              |     |                |                                |                             |
| 39 | 27.00362. 0.00 | ROTOR VOLANTE REV-80 03                   | 94   | 29.09613. 0.00 | TAMBOR EMBRAGUE REV-80                 | 149 | 10.15120. 8.00 | EJE PUESTA EN MARCHA RK6-50            |     |                |                                |                             |
| 40 | 16.33560. 0.00 | GOMA PASACABLE VOLANTE                    | 95   | 13.42050. 0.00 | DISCO PORTAMOLLA REV-80                | 150 | 18.14620. 8.00 | ENGRANAJE PUESTA EN MARCHA RK6-50      |     |                |                                |                             |
| 41 | 27.52500. 0.00 | ARANDELA GROWER 10                        | 96   | 28.16820. 0.00 | CASQUILLO CIERRE EMBRAGUE RK6-50/95    | 151 | 22.78250. 0.00 | MUELLE RETORNO PALANCA ARRANQUE RK6-50 |     |                |                                |                             |
| 42 | 13.25100. 0.00 | TUERCA ESP. 10.1,25.17 CH15               | 97   | 16.11250. 0.00 | GABIA 6.19.2 C/ARANDELAS               | 152 | 13.48080. 0.00 | DISTANCIADOR EJE P.MARCHA RK6-50       |     |                |                                |                             |
| 43 | 12.70090. 0.57 | TAPA VOLANTE TECHNO-50                    | 98   | 25.52991. 0.00 | EJE ATAQUE EMBRAGUE REV-80             | 153 | 25.43910. 0.00 | EJE ENGRANAJE REEMBIO ARRANQUE RK6-50  |     |                |                                |                             |
| 44 | 10.67300. 0.00 | JUNTA TORICA 120,37.123,93.1,78           | 99   | 28.22610. 0.00 | SEEGER 6E                              | 154 | 31.31050. 0.00 | TORNILLO ALLEN TCCE 6.15               |     |                |                                |                             |
| 45 | 12.06228. 0.33 | CARTER REV-80 03                          | 100  | 31.34400. 0.00 | TORNILLO 6.20 TSPCE                    | 155 | 18.67810. 8.00 | ENGRANAJE LIBRE REV-80                 |     |                |                                |                             |
| 46 | 16.41510. 0.00 | CASQUILLO CENTRADOR 17.14,5               | 1001 | 22.65093. 0.00 | MUELLE EMBRAGUE REV-80 03              | 156 | 12.05063. 0.00 | CARBURADOR PHBG 21 REV-80              |     |                |                                |                             |
| 47 | 25.98050. 0.00 | ESPARRAGO 8.41                            | 102  | 11.59150. 0.00 | TORNILLO 10.20 C/ARANDELA              | 157 | 15.15370. 0.00 | BRIDA 25/37 VELOXBLOC 4B               |     |                |                                |                             |
| 48 | 13.17121. 0.00 | TUERCA M8 BASE CILINDRO CH.10             | 103  | 12.95500. 0.00 | COJINETE 17.40.9                       | 158 | 31.34510. 0.00 | TORNILLO ALLEN TCCE 6.20               |     |                |                                |                             |
| 49 | 16.50511. 0.00 | JUNTA 10.15.2 COBRE                       | 104  | 10.23520. 8.00 | EJE PRIMARIO RK6-50                    | 159 | 27.23051. 0.00 | RACORD CARBURADOR MINI MCH             |     |                |                                |                             |
| 50 | 11.58020. 0.00 | TORNILLO RESPIRADERO ACEITE C/CALAMITA    | 105  | 18.38411. 8.00 | ENGRANAJE 5° VEL. SU 1° REV-80 2°vers  | 160 | 31.02140. 0.00 | CAJA LAMINAS COMPL. TECHNO             |     |                |                                |                             |
| 51 | 12.62098. 0.33 | TAPA EMBRAGUE REV-80 03                   | 106  | 28.24950. 0.00 | SEEGER 17 SW                           | 161 | 25.59670. 0.00 | PLATINA FIJACION LAMINAS REV-80        |     |                |                                |                             |
| 52 | 16.74930. 0.00 | JUNTA TAPA BOMBA REV-80                   | 107  | 18.37651. 8.00 | ENGRANAJE 3/4° SU 1° REV-80            | 162 | 21.15360. 0.00 | LAMINA ADMISION 4M/PM                  |     |                |                                |                             |
| 53 | 12.67941. 0.33 | TAPA BOMBA AGUA REV-80 03                 | 108  | 28.24950. 0.00 | SEEGER 17 SW                           | 163 | 16.92550. 0.00 | JUNTA CAJA LAMINAS 4M/PM               |     |                |                                |                             |
| 54 | 31.30510. 0.00 | TORNILLO 6.30 TSPCE                       | 109  | 18.38741. 8.00 | ENGRANAJE 6° VEL. SU 1° REV-80 2°vers  | 164 | 11.20638. 0.00 | BOBINA ELECTR. ATE REV-80              |     |                |                                |                             |
| 55 | 27.40490. 0.00 | ARANDELA PLANA 6x10                       | 110  | 18.34110. 8.00 | ENGRANAJE 2°VEL. REV-80 03             | 165 | 16.49500. 0.00 | JUNTA 8.20.1 (COBRE)                   |     |                |                                |                             |





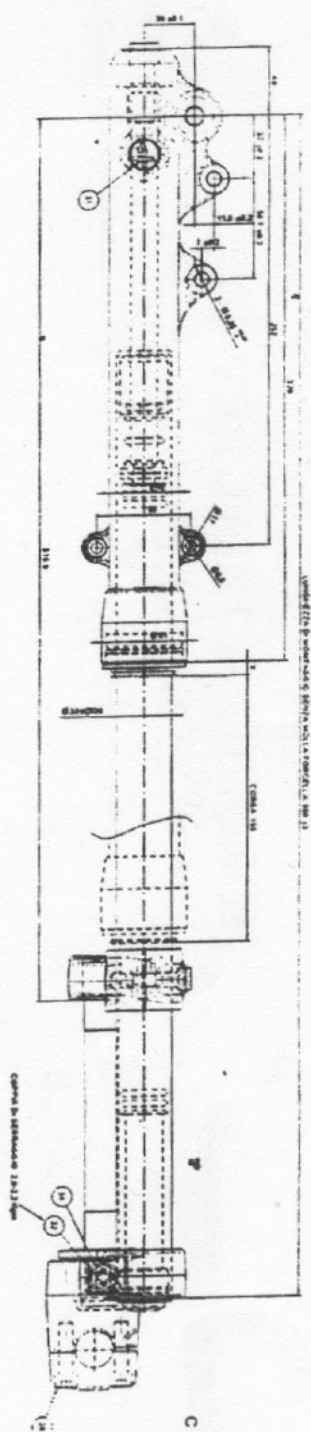
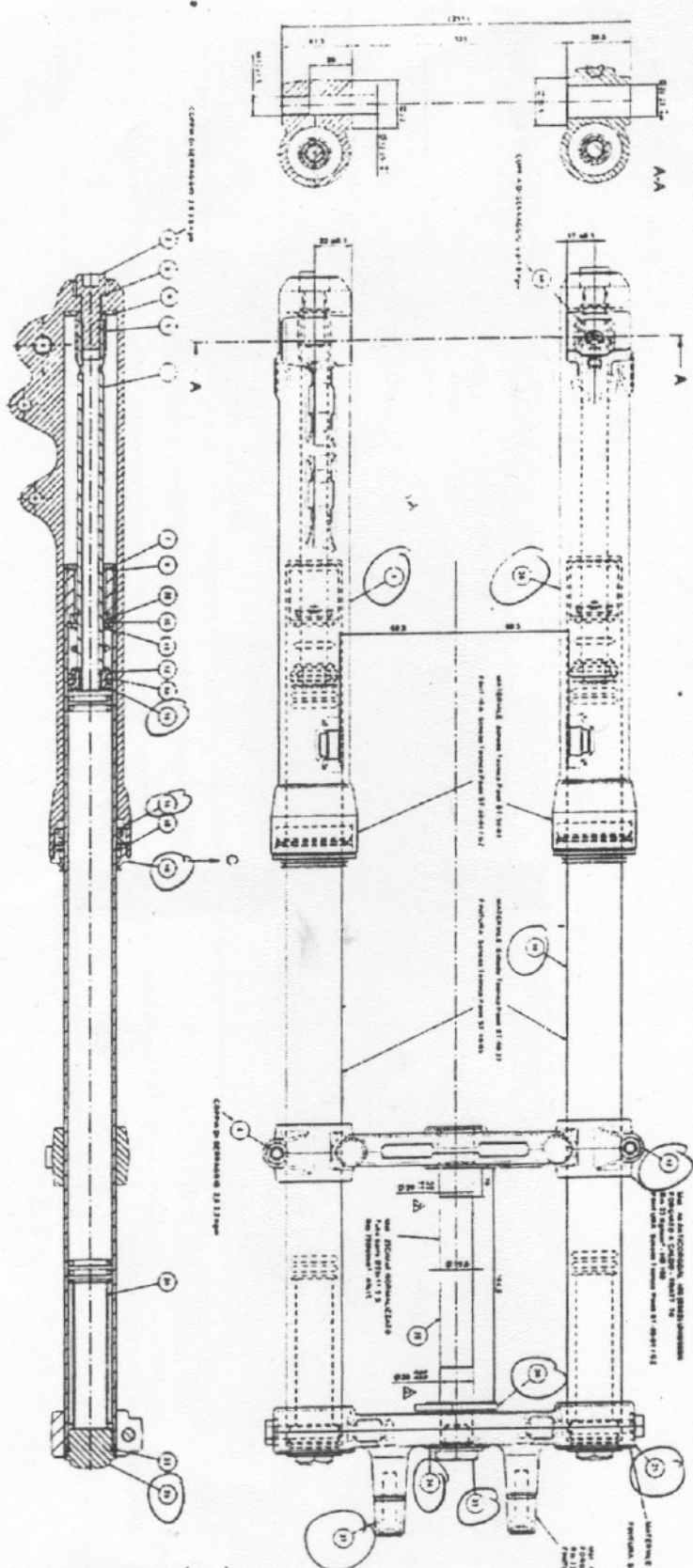
| N° | Código         | Descripción                               | N°   | Código         | Descripción                            | N°  | Código         | Descripción                            | N°  | Código         | Descripción                    |
|----|----------------|---|------|----------------|--|-----|----------------|--|-----|----------------|--------------------------------|
| 1  | 27.13513. 0.00 | PIPA BUJIA REV-80                         | 56   | 29.10030. 0.00 | TAPON VISOR ACEITE                     | 111 | 27.60500. 0.00 | ARANDELA SPEC. C72 12.25.1             | 166 | 29.11960. 0.00 | TERMOSTATO TEMPERATURA TR.     |
| 2  | 12.25200. 0.00 | BUJIA RN3C SCHERMATA                      | 57   | 12.91895. 0.33 | CUERPO BOMBA C/PISTÓN REV-80           | 112 | 11.22250. 0.00 | COJINETE AGUJAS NK 12.19.12            | 167 | 12.30460. 0.00 | CAPUCHON BOBINA DUCATI         |
| 3  | 11.52425. 0.00 | TORNILLO ESPECIAL 7.33                    | 58   | 31.83530. 0.00 | TRNLL ESPECIAL CUERPO BOMBA REV-80     | 113 | 27.31640. 0.00 | REMACHE PARA CORONA 5.9 EMBRAGUE RK    | 168 | 12.08200. 0.00 | CADENA 1/2.5/16 P.126          |
| 4  | 27.45100. 0.00 | ARANDELA PLANA COBRE 7.12.0,2             | 59   | 10.66750. 0.00 | JUNTA TORICA CUERPO BOMBA REV-80       | 114 | 22.72031. 0.00 | MUELLE RETORNO SELECTOR REV-80         |     |                |                                |
| 5  | 29.12050. 0.57 | CULATA REV-80                             | 60   | 29.09600. 0.00 | TAPON ALIMENTACION ACEITE RK6-50       | 115 | 25.54410. 0.00 | EJE FIJACION HORQUILLA SELECTOR RK6-50 |     |                |                                |
| 6  | 10.67110. 0.00 | JUNTA TORICA 53,70.57,26.1,78             | 61   | 10.66340. 0.00 | JUNTA TORICA 16.3                      | 116 | 31.20980. 8.00 | HORQUILLA SELECTOR BK C/EJE            |     |                |                                |
| 7  | 10.66960. 0.00 | JUNTA TORICA 94,97.98.53.1,78             | 62   | 31.88500. 0.00 | TORNILLO RETORNO MUELLE HORQUILLA R    | 117 | 31.20970. 8.00 | HORQUILLA SELECTOR BK C/EJE            |     |                |                                |
| 8  | 15.15230. 0.00 | BRIDA 14/24                               | 63   | 16.49100. 0.00 | JUNTA 8.12.0,5 (COBRE)                 | 118 | 22.68010. 0.00 | MUELLE HORQUILLA CAMBIO RK6/TECHNO     |     |                |                                |
| 9  | 29.15910. 0.00 | TUBO REFR. CIL. RK650 sust.29.15671. 0.00 | 64   | 16.71520. 0.00 | JUNTA TAPA EMBRAGUE RK6-50             | 119 | 10.12010. 8.00 | EJE PALANCA CAMBIO COMPL. RK6-50       |     |                |                                |
| 10 | 16.80321. 0.00 | JUNTA ESCAPE RR                           | 65   | 16.37010. 0.00 | CASQUILLO CENTRADOR 9.15               | 120 | 10.12010. 0.00 | EJE PALANCA CAMBIO RK6-50              |     |                |                                |
| 11 | 12.52062. 0.57 | CILINDRO D48 REV-80                       | 66   | 25.98050. 0.00 | ESPARRAGO 8.41                         | 121 | 10.47500. 0.00 | RETEN 12.20.5                          |     |                |                                |
| 12 | 16.61750. 0.00 | JUNTA CILINDRO CARTER RK6                 | 67   | 27.23470. 0.00 | RACORD MOTOR RK6-50/ TUBO GASOLINA R   | 122 | 21.21220. 0.00 | PALANCA CAMBIO MARCHAS RK6-50          |     |                |                                |
| 13 | 28.60180. 0.00 | SEGMENTO D.48 AC RK6 (CROMADO)            | 68   | 16.55030. 0.00 | JUNTA CARTER RK6-50                    | 123 | 28.25410. 0.00 | SEEGER AS 20E                          |     |                |                                |
| 14 | 10.42010. 0.00 | ANILLO CIERRE BULON 12 S/GANCHO           | 69   | 16.41530. 0.00 | CASQUILLO CENTRADOR 12.14,5            | 124 | 25.61060. 0.00 | PIÑON CADENA Z.11 TR-125               |     |                | MATERIAL NO FIGURA EN DESPIECE |
| 15 | 25.80210. 8.00 | PISTÓN COMPLETO D48 REV-80                | 70   | 22.68015. 0.00 | MUELLE EJE CAMBIO                      | 125 | 13.55280. 0.00 | DISTANCIADOR PIÑON CADENA RK6-50       |     |                |                                |
| 16 | 28.93620. 0.00 | BULON 12.40                               | 71   | 25.61011. 0.00 | EJE GUIA HORQUILLA CAMBIO REV-80       | 126 | 10.66380. 0.00 | JUNTA TORICA 18,77.22,33.1,78          |     | 11.00686. 8.00 | CAMBIO COMPLETO REV-80 03      |
| 17 | 25.80270. 0.00 | PISTON DIAM.48 RK6-50                     | 72   | 15.64031. 0.00 | HORQUILLA 5-6 REV-80 2°vers.           | 127 | 10.64700. 0.00 | RETEN 26.35.7                          |     | 22.05070. 8.00 | EJE PUESTA EN MARCHA REV-80    |
| 18 | 10.42010. 0.00 | ANILLO CIERRE BULON 12 S/GANCHO           | 73   | 11.29035. 0.00 | TORNILLO 6.30 TSPCE                    | 128 | 12.98000. 0.00 | COJINETE 20.42.12                      |     | 28.08070. 8.00 | SERIE JUNTAS MOTOR RK6-50      |
| 19 | 11.03716. 8.00 | BIELA COMPLETA REV-80 03 2°vers           | 74   | 31.30510. 0.00 | TORNILLO 6.30 TSPCE                    | 129 | 10.28051. 8.00 | EJE SECUNDARIO REV-80                  |     |                |                                |
| 20 | 16.11500. 0.00 | GABIA BULON 12.15.15                      | 75   | 12.19122. 0.00 | SELECTOR MARCHAS REV-80 03             | 130 | 18.52030. 8.00 | ENGRANAJE 2° VEL. SU REV-80            |     |                |                                |
| 21 | 28.22640. 0.00 | SEEGER 9E                                 | 76   | 12.99405. 0.00 | COJINETE 25x37x7                       | 131 | 28.25410. 0.00 | SEEGER AS 20E                          |     |                |                                |
| 22 | 31.21831. 0.00 | ASPAS BOMBA AGUA RK6-50 (BOMBA SEPARAD    | 77   | 27.73695. 0.00 | ARANDELA ESP CAMBIO MARCHAS REV-80     | 132 | 18.67142. 8.00 | ENGRANAJE 6° VEL. SU 2° REV-80         |     |                |                                |
| 23 | 10.44610. 0.00 | RETEN 10.18.4 M/INOX.                     | 78   | 12.19113. 0.00 | SELECTOR MARCHAS REV-80                | 133 | 28.25410. 0.00 | SEEGER AS 20E                          |     |                |                                |
| 24 | 12.93440. 0.00 | COJINETE 10.19.5 (61800-2RS1)             | 79   | 15.64012. 0.00 | HORQUILLA 1-4 REV-80 2°vers.           | 134 | 18.61500. 8.00 | ENGRANAJE 3° VEL. SU 2° RK6-50         |     |                |                                |
| 25 | 12.93390. 0.00 | COJINETE 10.19.5 (61800)                  | 80   | 25.51021. 0.00 | EJE GUIA HORQUILLA CAMBIO REV-80       | 135 | 18.64100. 8.00 | ENGRANAJE 4° VEL. SU 2° RK6-50         |     |                |                                |
| 26 | 10.27750. 0.00 | EJE BOMBA AGUA RK6/97 (SEPARADO)          | 81   | 15.64011. 0.00 | HORQUILLA 2-3 REV-80 2°vers.           | 136 | 28.25410. 0.00 | SEEGER AS 20E                          |     |                |                                |
| 27 | 13.28951. 0.00 | TUERCA ESPE. 14.1,25.5 CH.22              | 82   | 25.54430. 0.00 | EJE FIJACION LEVA CAMBIO TECHNO        | 137 | 18.66442. 8.00 | ENGRANAJE 5° VEL. SU 2° REV-80 2°vers. |     |                |                                |
| 28 | 27.61550. 0.00 | ARANDELA SPEC. C72 14,3.20.1 MM           | 83   | 22.39580. 0.00 | MUELLE FIJACION MARCHAS RK6-50         | 138 | 16.12650. 0.00 | GABIA 14.18.8                          |     |                |                                |
| 29 | 29.07302. 8.00 | TRANSMISIÓN PRIMARIA C/CAPMPANA REV-80    | 84   | 21.17150. 0.00 | MANDO FIJACIÓN MARCHA COMPL. REV-80    | 139 | 18.43023. 8.00 | ENGRANAJE 1° VEL. SU REV-80 03         |     |                |                                |
| 30 | 10.64111. 0.00 | RETEN 20.35.6/6,5 VYTON                   | 85   | 28.22700. 0.00 | SEEGER 10E                             | 140 | 27.60500. 0.00 | ARANDELA SPEC. C72 12.25.1             |     |                |                                |
| 31 | 12.99022. 0.00 | COJINETE 20.52.15 C/GABIA                 | 86   | 27.71100. 0.00 | ARANDELA SPEC. 17.30.1,5               | 141 | 11.22250. 0.00 | COJINETE AGUJAS NK 12.19.12            |     |                |                                |
| 32 | 10.00682. 0.00 | CIGÜEÑAL MOTOR REV-80 2°vers.             | 87   | 11.27120. 0.00 | CASQUILLO 17.21.17,2 CORONA EMBRAGUE R | 142 | 21.55153. 0.00 | PALANCA PUESTA EN MARCHA CR-65/2001    |     |                |                                |
| 33 | 12.46000. 0.00 | CHAVETA 3.3,7,9,7                         | 88   | 16.17280. 0.00 | GABIA 3.1.25.17                        | 143 | 10.52010. 0.00 | RETEN 14.24.7                          |     |                |                                |
| 34 | 12.99022. 0.00 | COJINETE 20.52.15 C/GABIA                 | 89   | 12.20770. 0.00 | CAMPANA EMBRAGUE MOD. RK6-50           | 144 | 11.31020. 0.00 | CASQUILLO 14.18.11,5                   |     |                |                                |
| 35 | 10.64110. 0.00 | RETEN 20.35.6/6,5 VYTON                   | 90   | 27.71100. 0.00 | ARANDELA SPEC. 17.30.1,5               | 145 | 22.36570. 0.00 | MUELLE CONICO ARRANQUE RK6-50          |     |                |                                |
| 36 | 25.60165. 0.00 | PLETINA STATOR REV-80 03                  | 91   | 12.29593. 0.00 | CABEZAL EMBRAGUE REV-80                | 146 | 27.61550. 0.00 | ARANDELA SPEC. C72 14,3.20.1 MM        |     |                |                                |
| 37 | 28.97807. 0.00 | STATOR PARA VOLANTE REV-80                | 92   | 13.38130. 0.00 | DISCO SEPARADOR RK6-50                 | 147 | 22.14090. 8.00 | PIÑON PUESTA EN MARCHA TECHNO-50       |     |                |                                |
| 38 | 31.03263. 0.00 | VOLANTE MAGNETICO REV-80 03               | 93   | 13.43210. 0.00 | DISCO EMBRAGUE RK6-50                  | 148 | 25.57945. 0.00 | PLACA EJE ARRANQUE REV-80              |     |                |                                |
| 39 | 27.00359. 0.00 | ROTOR VOLANTE REV-80 03                   | 94   | 29.09613. 0.00 | TAMBOR EMBRAGUE REV-80                 | 149 | 10.15120. 8.00 | EJE PUESTA EN MARCHA RK6-50            |     |                |                                |
| 40 | 16.33560. 0.00 | GOMA PASACABLE VOLANTE                    | 95   | 13.42050. 0.00 | DISCO PORTAMOLLA REV-80                | 150 | 18.14620. 8.00 | ENGRANAJE PUESTA EN MARCHA RK6-50      |     |                |                                |
| 41 | 27.52500. 0.00 | ARANDELA GROWER 10                        | 96   | 28.16820. 0.00 | CASQUILLO CIERRE EMBRAGUE RK6-50/95    | 151 | 22.78250. 0.00 | MUELLE RETORNO PALANCA ARRANQUE RK6-50 |     |                |                                |
| 42 | 13.25100. 0.00 | TUERCA ESP. 10.1,25.17 CH15               | 97   | 16.11250. 0.00 | GABIA 6.19.2 C/ARANDELAS               | 152 | 13.48080. 0.00 | DISTANCIADOR EJE P.MARCHA RK6-50       |     |                |                                |
| 43 | 12.70090. 0.57 | TAPA VOLANTE TECHNO-50                    | 98   | 25.52991. 0.00 | EJE ATAQUE EMBRAGUE REV-80             | 153 | 25.43910. 0.00 | EJE ENGRANAJE REEMBIO ARRANQUE RK6-50  |     |                |                                |
| 44 | 10.67300. 0.00 | JUNTA TORICA 120,37.123,93.1,78           | 99   | 28.22610. 0.00 | SEEGER 6E                              | 154 | 31.31050. 0.00 | TORNILLO ALLEN TCCE 6.15               |     |                |                                |
| 45 | 12.06228. 0.33 | CARTER REV-80 03                          | 100  | 31.34400. 0.00 | TORNILLO 6.20 TSPCE                    | 155 | 18.67810. 8.00 | ENGRANAJE LIBRE REV-80                 |     |                |                                |
| 46 | 16.41510. 0.00 | CASQUILLO CENTRADOR 17.14,5               | 1001 | 22.65093. 0.00 | MUELLE EMBRAGUE REV-80 03              | 156 | 12.05063. 0.00 | CARBURADOR PHBG 21 REV-80              |     |                |                                |
| 47 | 25.98050. 0.00 | ESPARRAGO 8.41                            | 102  | 11.59150. 0.00 | TORNILLO 10.20 C/ARANDELA              | 157 | 15.15370. 0.00 | BRIDA 25/37 VELOXBLOC 4B               |     |                |                                |
| 48 | 13.17121. 0.00 | TUERCA M8 BASE CILINDRO CH.10             | 103  | 12.95500. 0.00 | COJINETE 17.40.9                       | 158 | 31.34510. 0.00 | TORNILLO ALLEN TCCE 6.20               |     |                |                                |
| 49 | 16.50511. 0.00 | JUNTA 10.15.2 COBRE                       | 104  | 10.23520. 8.00 | EJE PRIMARIO RK6-50                    | 159 | 27.23051. 0.00 | RACORD CARBURADOR MINI MCH             |     |                |                                |
| 50 | 11.58020. 0.00 | TORNILLO RESPIRADERO ACEITE C/CALAMITA    | 105  | 18.38412. 8.00 | ENGRANAJE 5° VEL. SU 1° REV-80 2°vers  | 160 | 31.02140. 0.00 | CAJA LAMINAS COMPL. TECHNO             |     |                |                                |
| 51 | 12.62098. 0.33 | TAPA EMBRAGUE REV-80 03                   | 106  | 28.24950. 0.00 | SEEGER 17 SW                           | 161 | 25.89670. 0.00 | PLATINA FIJACIÓN LÁMINAS REV-80        |     |                |                                |
| 52 | 16.74930. 0.00 | JUNTA TAPA BOMBA REV-80                   | 107  | 18.37652. 8.00 | ENGRANAJE 3/4° SU 1° REV-80            | 162 | 21.15360. 0.00 | LAMINA ADMISION 4M/PM                  |     |                |                                |
| 53 | 12.67941. 0.33 | TAPÁ BOMBA AGUA REV-80 03                 | 108  | 28.24950. 0.00 | SEEGER 17 SW                           | 163 | 16.92550. 0.00 | JUNTA CAJA LAMINAS 4M/PM               |     |                |                                |
| 54 | 31.30510. 0.00 | TORNILLO 6.30 TSPCE                       | 109  | 18.38742. 8.00 | ENGRANAJE 6° VEL. SU 1° REV-80 2°vers  | 164 | 11.20638. 0.00 | BOBINA ELECT. ATE REV-80               |     |                |                                |
| 55 | 27.40490. 0.00 | ARANDELA PLANA 6x10                       | 110  | 18.34110. 8.00 | ENGRANAJE 2°VEL. REV-80 03             | 165 | 16.49500. 0.00 | JUNTA 8.20.1 (COBRE)                   |     |                |                                |

Sezione D-D  
Sezione D-D



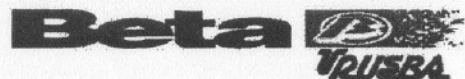
**LEGENDA**

1. VITE TACE...  
2. BOLLICELLA...  
3. DADO...  
4. VITE...  
5. BOLLICELLA...  
6. BOLLICELLA...  
7. BOLLICELLA...  
8. BOLLICELLA...  
9. BOLLICELLA...  
10. BOLLICELLA...  
11. BOLLICELLA...  
12. BOLLICELLA...  
13. BOLLICELLA...  
14. BOLLICELLA...  
15. BOLLICELLA...  
16. BOLLICELLA...  
17. BOLLICELLA...  
18. BOLLICELLA...  
19. BOLLICELLA...  
20. BOLLICELLA...  
21. BOLLICELLA...  
22. BOLLICELLA...  
23. BOLLICELLA...  
24. BOLLICELLA...  
25. BOLLICELLA...  
26. BOLLICELLA...  
27. BOLLICELLA...  
28. BOLLICELLA...  
29. BOLLICELLA...  
30. BOLLICELLA...  
31. BOLLICELLA...  
32. BOLLICELLA...  
33. BOLLICELLA...  
34. BOLLICELLA...  
35. BOLLICELLA...  
36. BOLLICELLA...  
37. BOLLICELLA...  
38. BOLLICELLA...  
39. BOLLICELLA...  
40. BOLLICELLA...  
41. BOLLICELLA...  
42. BOLLICELLA...  
43. BOLLICELLA...  
44. BOLLICELLA...  
45. BOLLICELLA...  
46. BOLLICELLA...  
47. BOLLICELLA...  
48. BOLLICELLA...  
49. BOLLICELLA...  
50. BOLLICELLA...  
51. BOLLICELLA...  
52. BOLLICELLA...  
53. BOLLICELLA...  
54. BOLLICELLA...  
55. BOLLICELLA...  
56. BOLLICELLA...  
57. BOLLICELLA...  
58. BOLLICELLA...  
59. BOLLICELLA...  
60. BOLLICELLA...  
61. BOLLICELLA...  
62. BOLLICELLA...  
63. BOLLICELLA...  
64. BOLLICELLA...  
65. BOLLICELLA...  
66. BOLLICELLA...  
67. BOLLICELLA...  
68. BOLLICELLA...  
69. BOLLICELLA...  
70. BOLLICELLA...  
71. BOLLICELLA...  
72. BOLLICELLA...  
73. BOLLICELLA...  
74. BOLLICELLA...  
75. BOLLICELLA...  
76. BOLLICELLA...  
77. BOLLICELLA...  
78. BOLLICELLA...  
79. BOLLICELLA...  
80. BOLLICELLA...  
81. BOLLICELLA...  
82. BOLLICELLA...  
83. BOLLICELLA...  
84. BOLLICELLA...  
85. BOLLICELLA...  
86. BOLLICELLA...  
87. BOLLICELLA...  
88. BOLLICELLA...  
89. BOLLICELLA...  
90. BOLLICELLA...  
91. BOLLICELLA...  
92. BOLLICELLA...  
93. BOLLICELLA...  
94. BOLLICELLA...  
95. BOLLICELLA...  
96. BOLLICELLA...  
97. BOLLICELLA...  
98. BOLLICELLA...  
99. BOLLICELLA...  
100. BOLLICELLA...



- 1. VITE TACE... 28
- 2. BOLLICELLA... 28
- 3. DADO... 28
- 4. VITE... 28
- 5. BOLLICELLA... 28
- 6. BOLLICELLA... 28
- 7. BOLLICELLA... 28
- 8. BOLLICELLA... 28
- 9. BOLLICELLA... 28
- 10. BOLLICELLA... 28
- 11. BOLLICELLA... 28
- 12. BOLLICELLA... 28
- 13. BOLLICELLA... 28
- 14. BOLLICELLA... 28
- 15. BOLLICELLA... 28
- 16. BOLLICELLA... 28
- 17. BOLLICELLA... 28
- 18. BOLLICELLA... 28
- 19. BOLLICELLA... 28
- 20. BOLLICELLA... 28
- 21. BOLLICELLA... 28
- 22. BOLLICELLA... 28
- 23. BOLLICELLA... 28
- 24. BOLLICELLA... 28
- 25. BOLLICELLA... 28
- 26. BOLLICELLA... 28
- 27. BOLLICELLA... 28
- 28. BOLLICELLA... 28
- 29. BOLLICELLA... 28
- 30. BOLLICELLA... 28
- 31. BOLLICELLA... 28
- 32. BOLLICELLA... 28
- 33. BOLLICELLA... 28
- 34. BOLLICELLA... 28
- 35. BOLLICELLA... 28
- 36. BOLLICELLA... 28
- 37. BOLLICELLA... 28
- 38. BOLLICELLA... 28
- 39. BOLLICELLA... 28
- 40. BOLLICELLA... 28
- 41. BOLLICELLA... 28
- 42. BOLLICELLA... 28
- 43. BOLLICELLA... 28
- 44. BOLLICELLA... 28
- 45. BOLLICELLA... 28
- 46. BOLLICELLA... 28
- 47. BOLLICELLA... 28
- 48. BOLLICELLA... 28
- 49. BOLLICELLA... 28
- 50. BOLLICELLA... 28
- 51. BOLLICELLA... 28
- 52. BOLLICELLA... 28
- 53. BOLLICELLA... 28
- 54. BOLLICELLA... 28
- 55. BOLLICELLA... 28
- 56. BOLLICELLA... 28
- 57. BOLLICELLA... 28
- 58. BOLLICELLA... 28
- 59. BOLLICELLA... 28
- 60. BOLLICELLA... 28
- 61. BOLLICELLA... 28
- 62. BOLLICELLA... 28
- 63. BOLLICELLA... 28
- 64. BOLLICELLA... 28
- 65. BOLLICELLA... 28
- 66. BOLLICELLA... 28
- 67. BOLLICELLA... 28
- 68. BOLLICELLA... 28
- 69. BOLLICELLA... 28
- 70. BOLLICELLA... 28
- 71. BOLLICELLA... 28
- 72. BOLLICELLA... 28
- 73. BOLLICELLA... 28
- 74. BOLLICELLA... 28
- 75. BOLLICELLA... 28
- 76. BOLLICELLA... 28
- 77. BOLLICELLA... 28
- 78. BOLLICELLA... 28
- 79. BOLLICELLA... 28
- 80. BOLLICELLA... 28
- 81. BOLLICELLA... 28
- 82. BOLLICELLA... 28
- 83. BOLLICELLA... 28
- 84. BOLLICELLA... 28
- 85. BOLLICELLA... 28
- 86. BOLLICELLA... 28
- 87. BOLLICELLA... 28
- 88. BOLLICELLA... 28
- 89. BOLLICELLA... 28
- 90. BOLLICELLA... 28
- 91. BOLLICELLA... 28
- 92. BOLLICELLA... 28
- 93. BOLLICELLA... 28
- 94. BOLLICELLA... 28
- 95. BOLLICELLA... 28
- 96. BOLLICELLA... 28
- 97. BOLLICELLA... 28
- 98. BOLLICELLA... 28
- 99. BOLLICELLA... 28
- 100. BOLLICELLA... 28





# HORQUILLA TRIAL REV-80

15.08134. 0.00

RECAMBIOS

Revisión: 03-03-03

| CÓDIGO         | DESCRIPCIÓN   | CANTIDAD | PRECIO | CÓDIGO         | DESCRIPCIÓN                                     | CANTIDAD | PRECIO |
|----------------|---|----------|--------|----------------|---|----------|--------|
| 16.18650. 0.00 | BOTELLA DERECHA HORQUILLA<br>15.08133/15.08134          | 1        |        | 29.50177. 0.57 | PLETINA SUPERIOR HORQUILLA<br>15.08134/15.08133 | 1        |        |
| 16.18392. 0.00 | BOTELLA IZQUIERDA HORQUILLA<br>15.08113/14              | 1        |        | 10.67525. 0.00 | RETEN HORQUILLA 15.08134/15.08133               | 2        |        |
| 12.32970. 0.00 | GRUPO MECANICO HORQ. 15.08134<br>REV-80                 | 2        |        | 10.41472. 0.00 | GUARDAPOLVO HORQUILLA<br>15.08134/15.08133      | 2        |        |
| 12.09736. 0.57 | PLETINA C/TUBO HORQUILLA<br>REV 80/50 15.08133/15.08134 | 1        |        | 22.52773. 0.00 | MUELLE HORQUILLA<br>15.08134/15.08133           | 2        |        |
| 16.00967. 0.00 | BRAZO COMPLETO DX (15.08134)<br>REV-80                  | 1        |        | 29.40460. 0.00 | BARRA HORQUILLA 15.08134 REV-80                 | 2        |        |
| 16.00938. 0.00 | BRAZO COMPLETO SX (15.08134)<br>REV-80                  | 1        |        | 29.01887. 0.00 | TAPON HORQUILLA 15.08134/15.08133               | 2        |        |